

A O U S H

2018

for amplified viola

RICHARD CHOWENHILL

Instrumentation

Amplified Viola

tube amp

ProCo RAT distortion pedal

Boss SD-1 overdrive pedal

Performance Notes

All accidentals carry through the measure. They are notated as they are in common practice music, with courtesy accidentals provided for the convenience of the performer.

Tremolos should be performed unmeasured, as quickly as possible.

A stopwatch or a flashing metronome may be useful to keep time.

Program Note

With **crush**, a single movement solo viola piece written for Kurt Rohde, composer Richard Chowenhill seeks to explore the common ground that exists between Musique Concrete Instrumentale and Extreme Metal, two styles which have been conventionally considered to be disparate. The fetishisation of complex and rare timbres is prominent within the compositional cultures of both respective styles, and has resulted in the evolution of what are essentially two parallel stylistic universes. **crush** features heavy amplification, drastic frequency saturation, and electronic signal modulation, achieved through the use of extended techniques as well as tube amplification and effects pedals.

Duration

ca. 12'

Notation Legend & Technical Specs

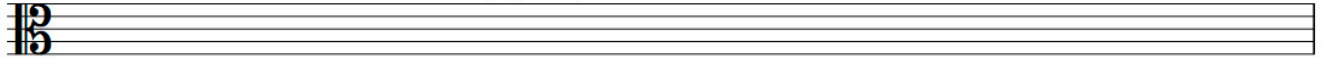
bow pressure indicator



↑ (less)

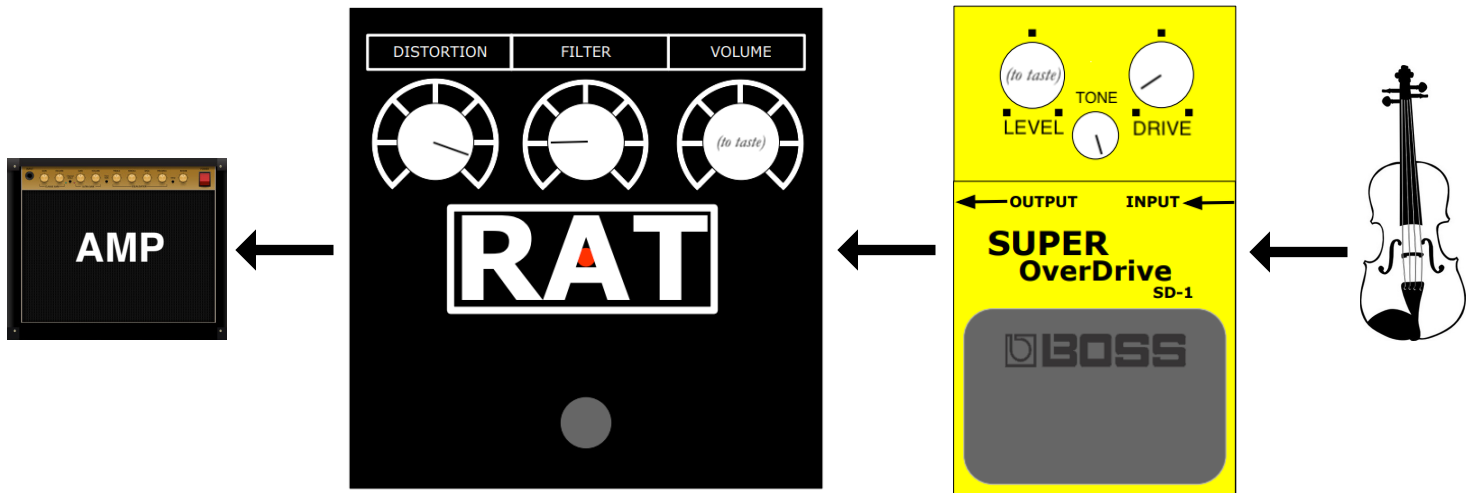
↓ (more)

middle indicates standard pressure



Signal Path

(refer to pedal illustrations for specific settings)



if necessary, a noise gate pedal may be inserted after RAT pedal

crush

for Kurt Rohde

Richard Chowenhill

intense, focused, crushing

30" ord. -----> moltissimo pont. 20" -----> poco pont. 10"

ff **fff** **p**

SD-1: OFF
 RAT: ON

5" pont. 5" 10" 5" 25" 10"

2 [III] -----> molto pont. -----> on bridge

p poco **f poco** **mf** **pp sub.** **p**

30" (on bridge) 6" 24" -----> ord.

3 [o III] -----> ord.

ppp sub. delicato (ppp) **f**

30" (ord.) 30" -----> molto pont.

4 [] -----> molto pont.

(f) **fff**

5

ppp sub. < p *pp < mp* *p < mf* *mp < f* *mf < f*

6

f < ff *ff < fff* *ff < fff* *ff < fff* *f < fff* -----> on bridge

move to *molto tasto* gradually through the course of the repeats

7

ppp < fff *ppp* *f dolce* *ffp fierce*

9

ppp < fff *ppp* *f dolce* *ffp fierce* *ppp < fff* *ppp* *f dolce* *ffp fierce*

13

ppp < fff *ppp* *f dolce* *ffp fierce* *ppp < fff* *ppp* *f dolce* *ffp fierce*

17

ppp < fff *ppp* *f dolce* *ffp fierce* *ppp < fff* *ppp* *f dolce* *ffp fierce*

21

ppp < fff *ppp* *f dolce* *ffp fierce* *ppp < fff* *ppp* *f dolce* *ffp fierce* *ppp < fff* *ppp*

♩ = 60 ca.
crystalline

molto pont.
senza vib.

SD-1: ON
RAT: OFF

32

molto tasto

♩ = 52 ca.
obsessively resonant

pont.
IV

39

45

moltissimo pont.

(re)enveloping

51

5" 5" 10" 5" 25" 10"

molto tasto

molto pont.

on bridge

SD-1: ON
RAT: ON

52

2" (on bridge) 134" 24" 8"

ord.